

# REINFORCED PLASTIC STRUCTURES

Reliable and safe  
reinforced plastic  
windows and doors



[paritetcompany.com](http://paritetcompany.com)





# ABOUT US



PAVLO CHEGAK  
CEO PARITET

PARITET was founded in 1996 and has been manufacturing translucent structures since its inception.

Large in-house production facilities and the best European equipment allow us to work and provide Ukrainian cities with quality products. All these years, we have been improving every process, minimizing costs and saving energy resources step by step.

PARITET is not resting on its laurels, but is increasing its production rates and striving to develop new markets.

The company makes strategic decisions in compliance with all market rules and fair competition. Each achievement is brought to perfection and successfully implemented.

The mobility of decision-making makes it possible to meet European quality standards depending on market needs and new technologies.

PARITET is open to new and interesting projects and is the undisputed leader in the Ukrainian market of translucent structures.



# WE MANUFACTURE

reinforced plastic windows, doors, sliding systems and partitions



facade glazing of any complexity, hinged and ventilated facades, glazing of verandas and terraces, panoramic windows



glass partitions, glass barriers, shower enclosures, glass walls and doors



tempered glass of any complexity, insulating glass units from standard to jumbo size





# PROFILE SYSTEMS



The German brand KBE is a leader in the model range of the international concern Profine. 35 patents for technological solutions in profile architecture.

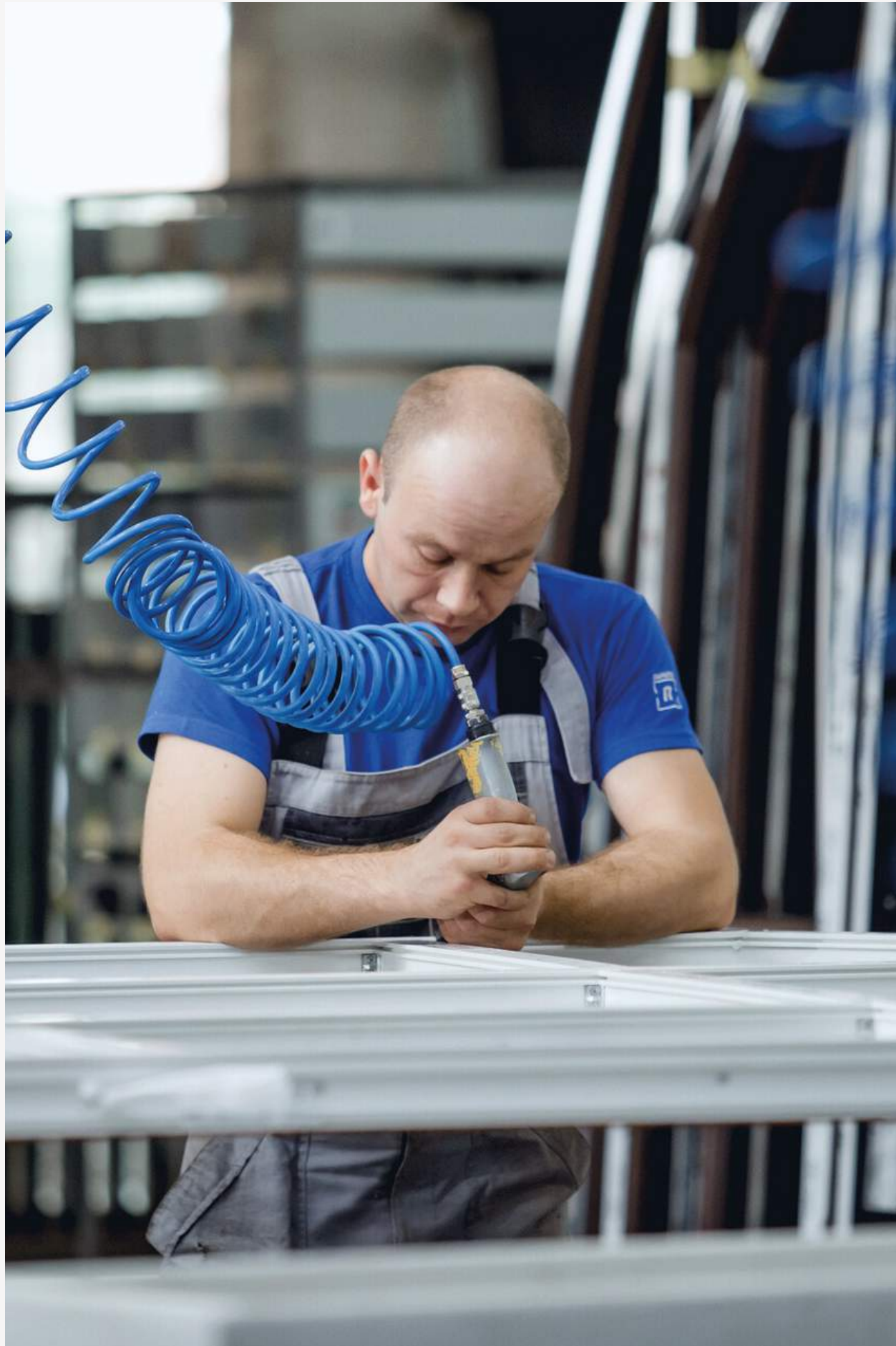


The premium brand KÖMMERLING is a full-service distributor with a wide range of window systems. A wide selection opens up virtually unlimited design options and allows you to realize even the most daring ideas.

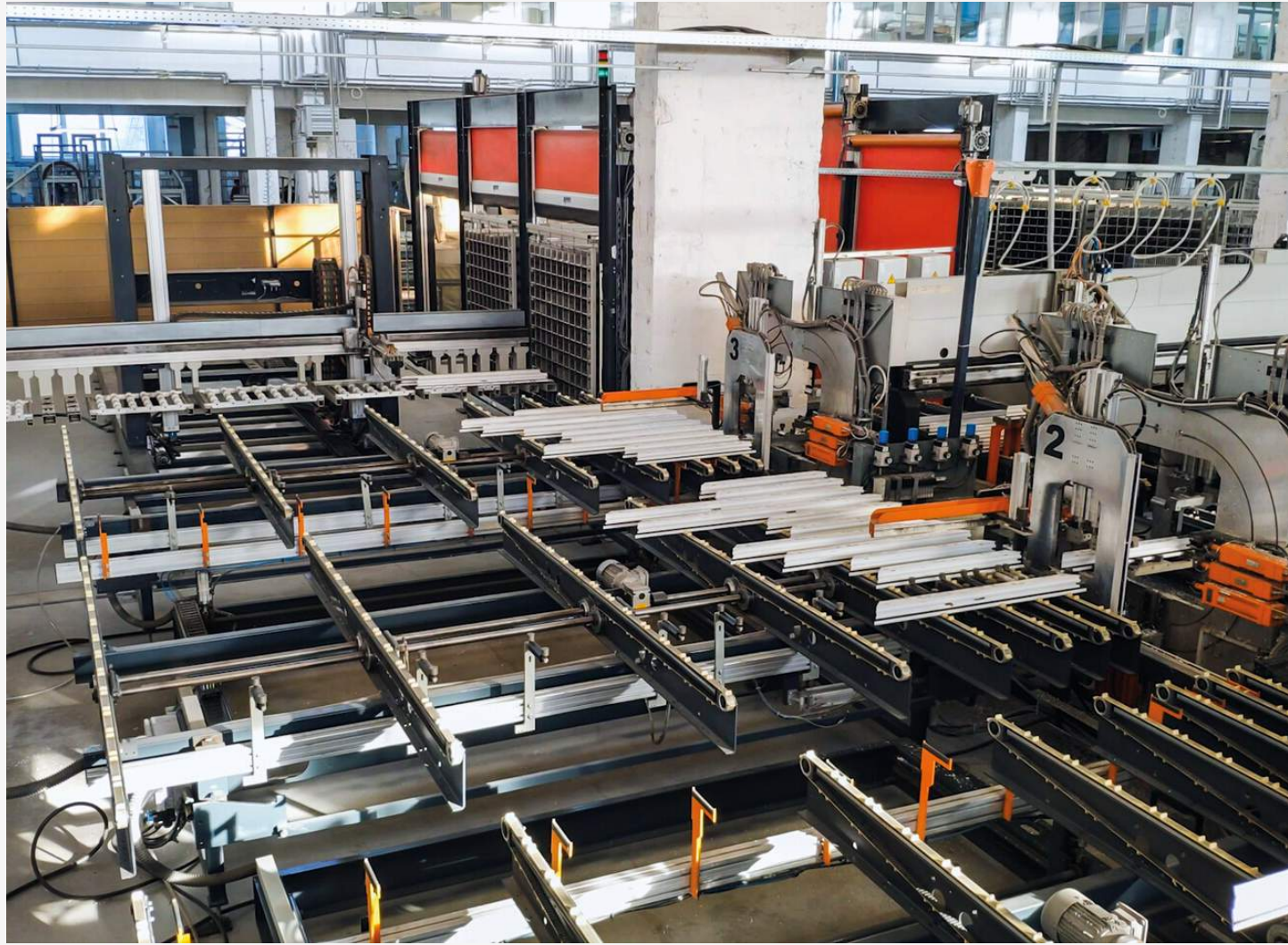


The Wintech brand represents both optimal and practical 3-chamber window systems and more advanced and technological 6-chamber systems. All systems are full-fledged products with not only basic profiles, but also many additional profiles. This makes it possible to manufacture windows with different sizes of insulating glass units, door structures, as well as windows with enhanced thermo-physical characteristics.

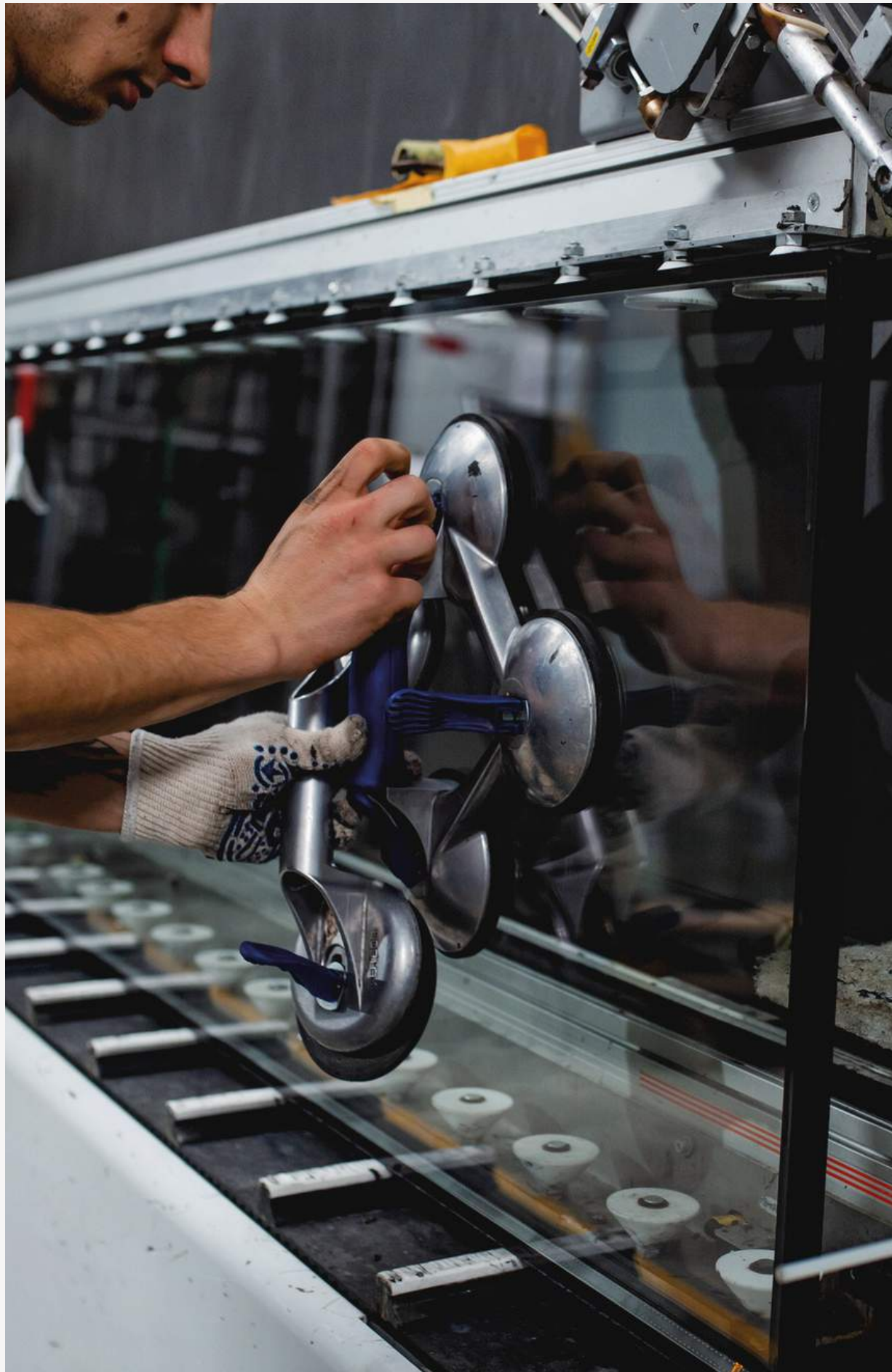












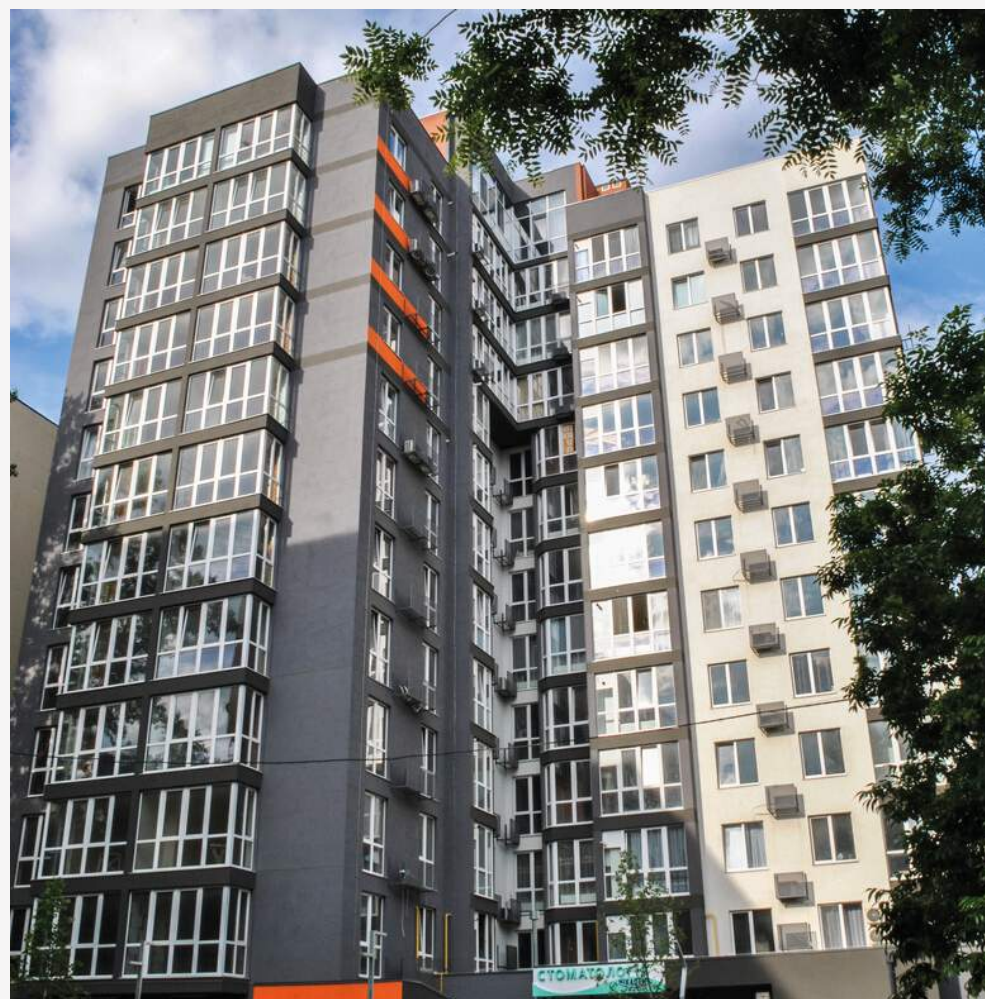


# RESIDENTIAL COMPLEX "SKHID"

📍 Odesa, Ukraine

📅 scope of work performed: 1630 sq.m

🕒 year of completion: 2019







# RESIDENTIAL COMPLEX "PARK SAUVIGNON"

📍 Odesa, Ukraine

📅 scope of work performed: 1960 sq.m

🕒 year of completion: 2019-2022



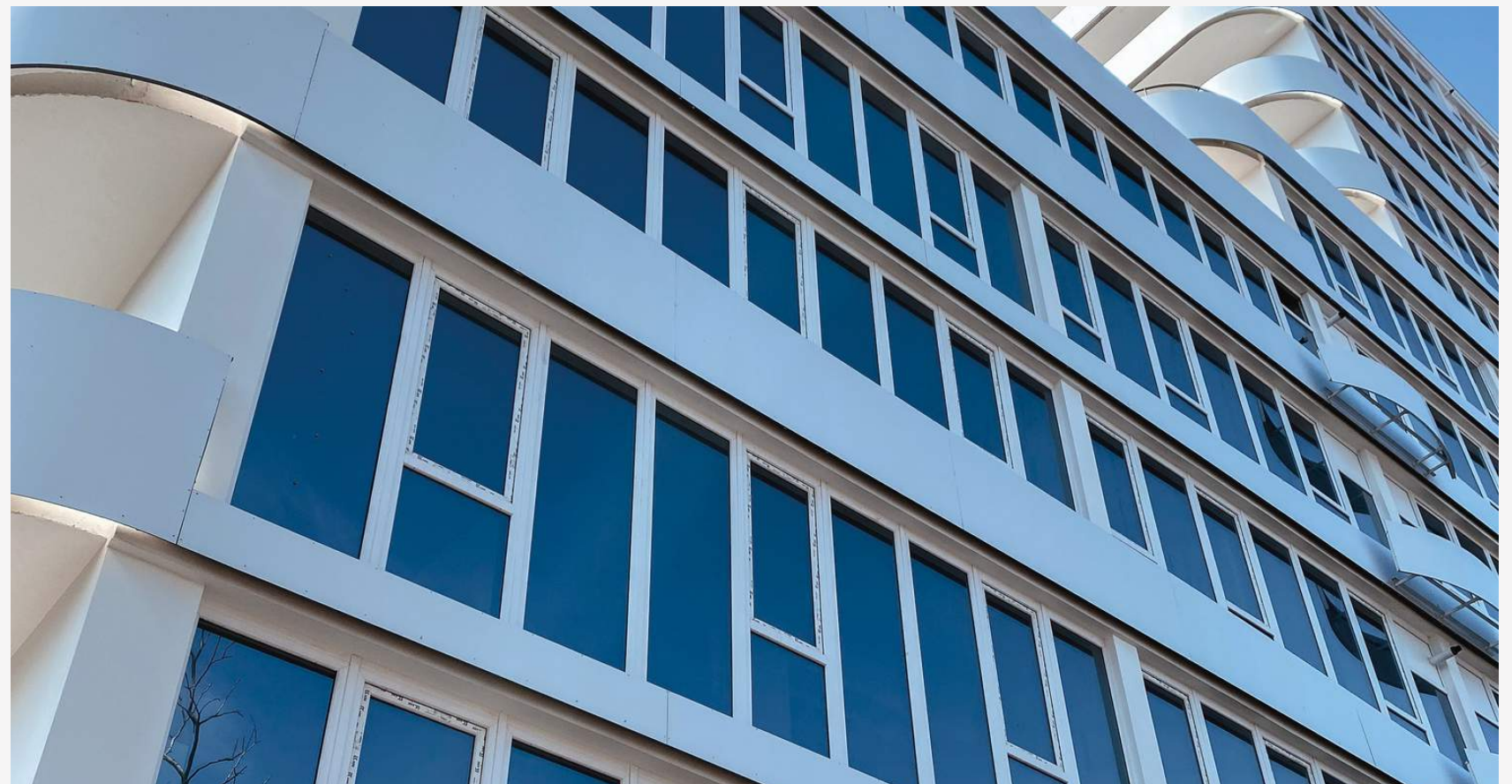


# RESIDENTIAL COMPLEX "MORE"

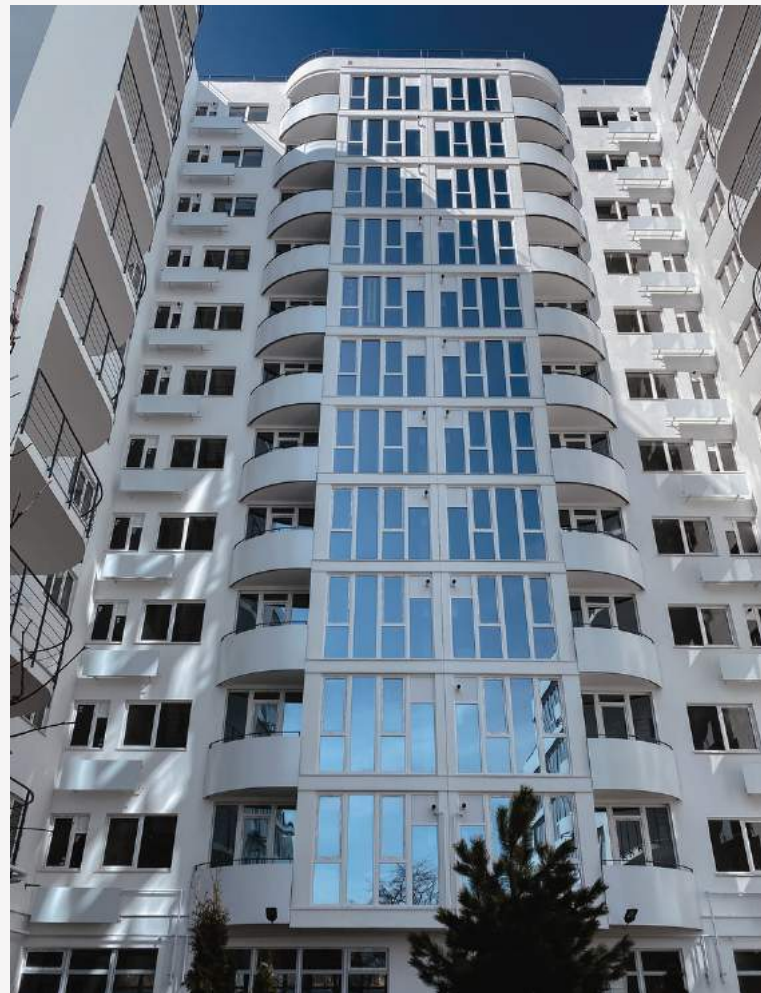
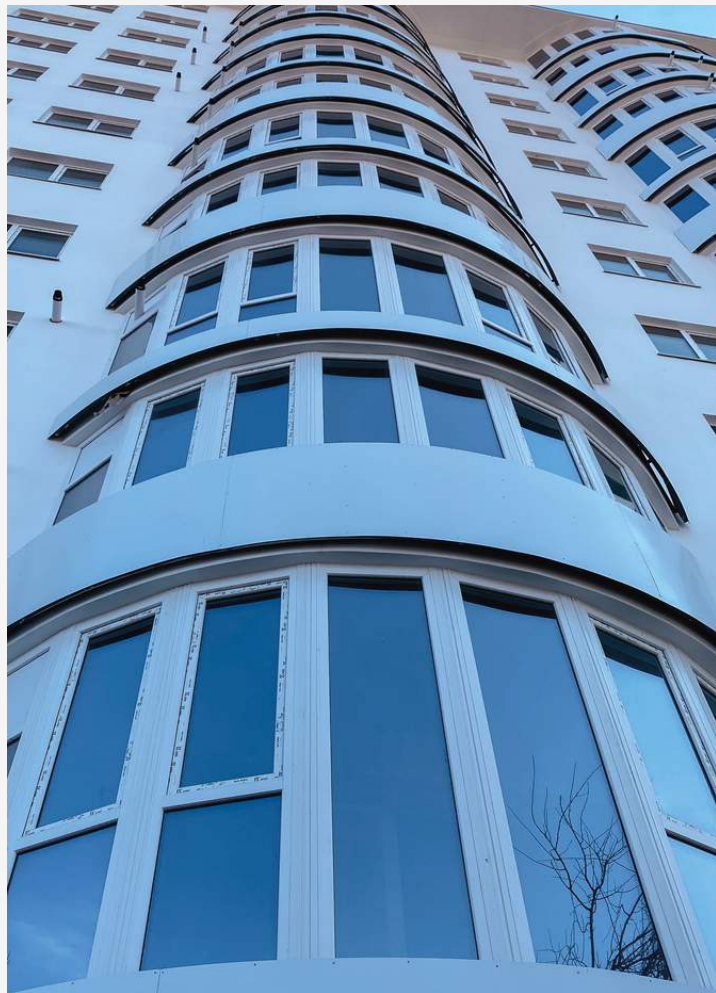
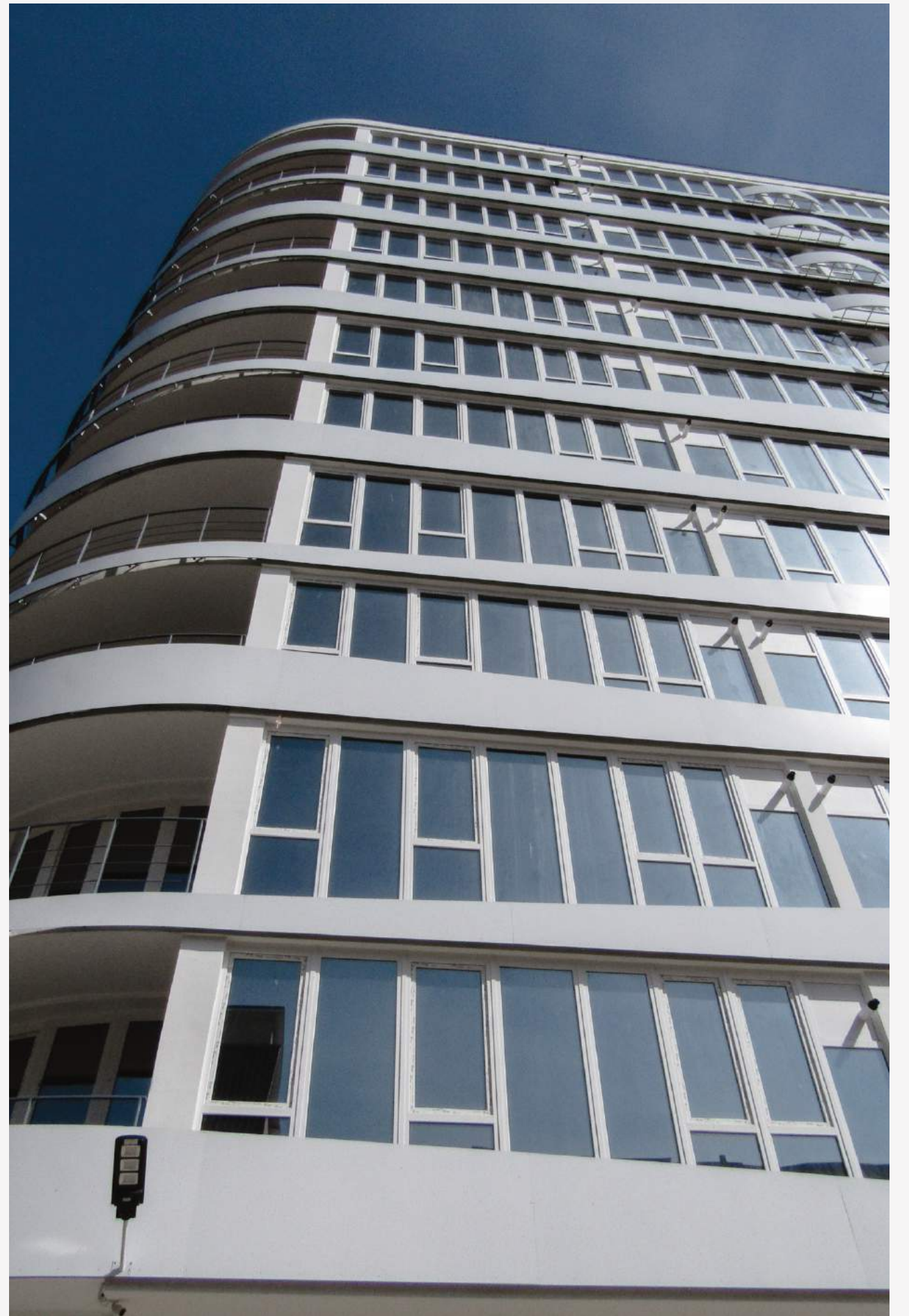
📍 Odesa, Ukraine

📅 scope of work performed: 10200 sq.m

🕒 year of completion: 2020







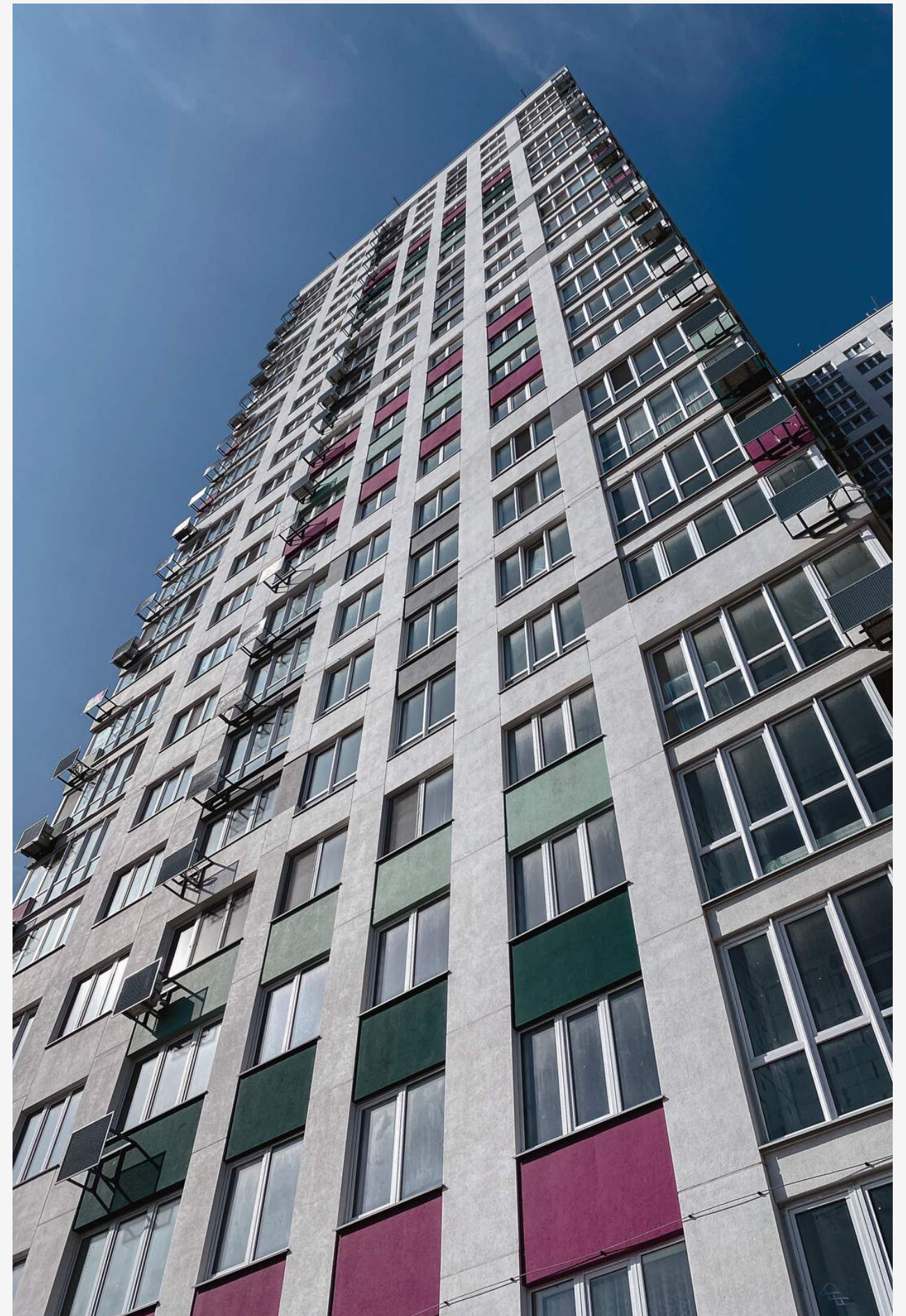
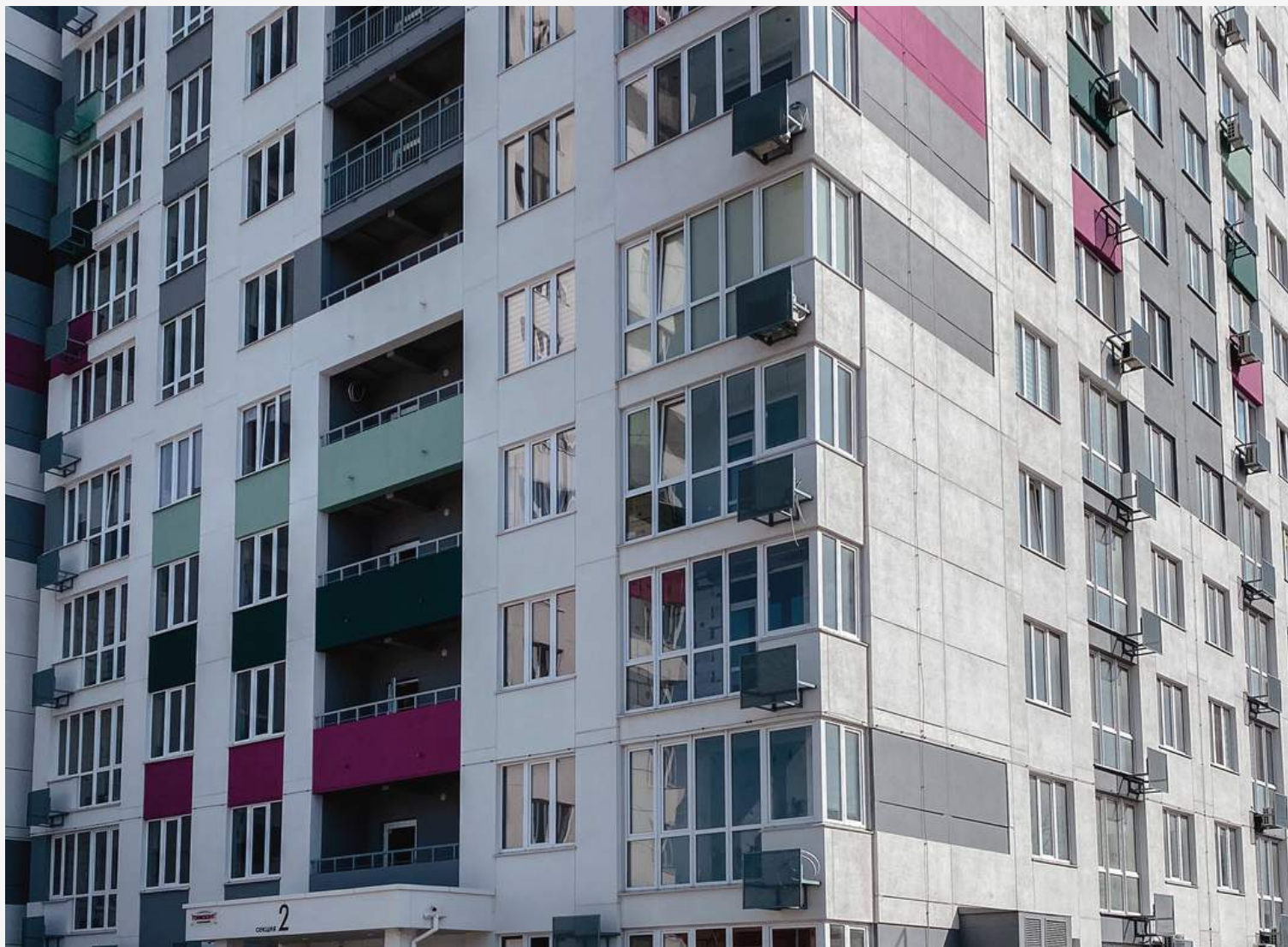


# RESIDENTIAL COMPLEX "HORYZONT"

 Odesa, Ukraine

 scope of work performed: 3850 sq.m

 year of completion: 2019



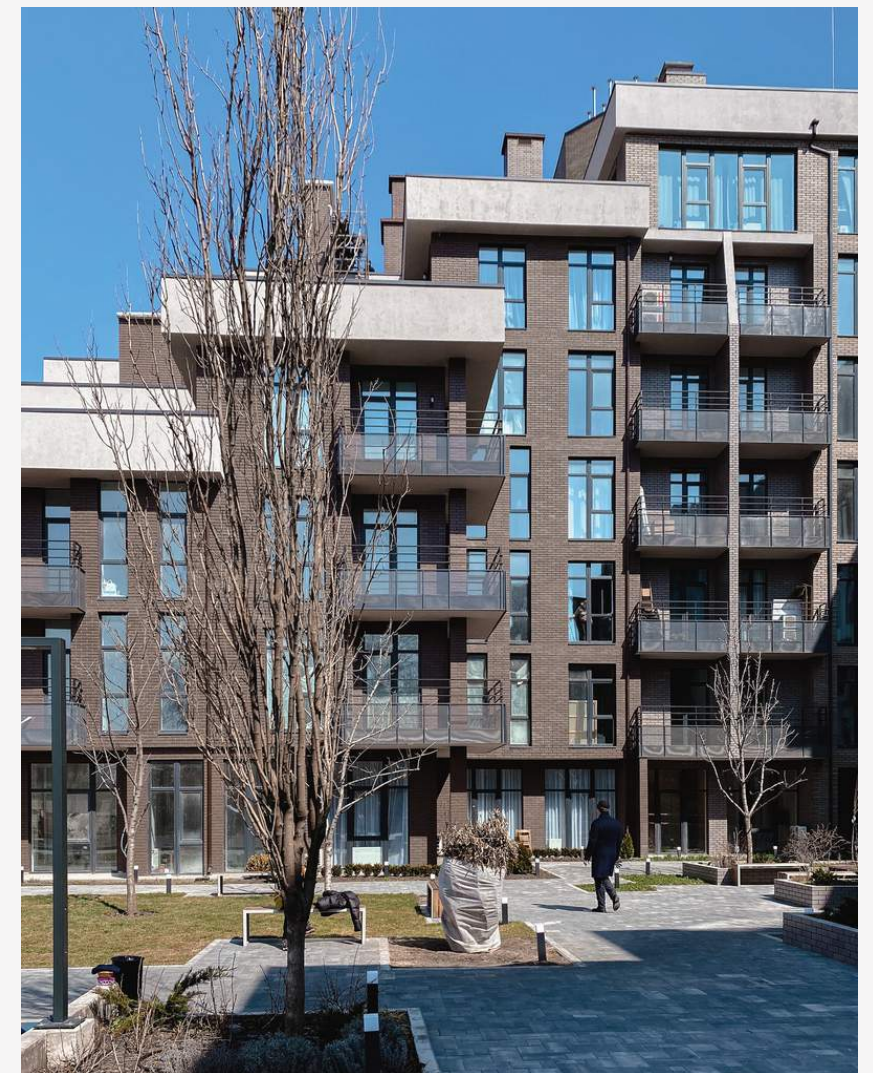


# RESIDENTIAL COMPLEX "PROSTIR NA NIEDIELINA"

📍 Odesa, Ukraine

📅 scope of work performed: 2380 sq.m

🕒 year of completion: 2019-2020



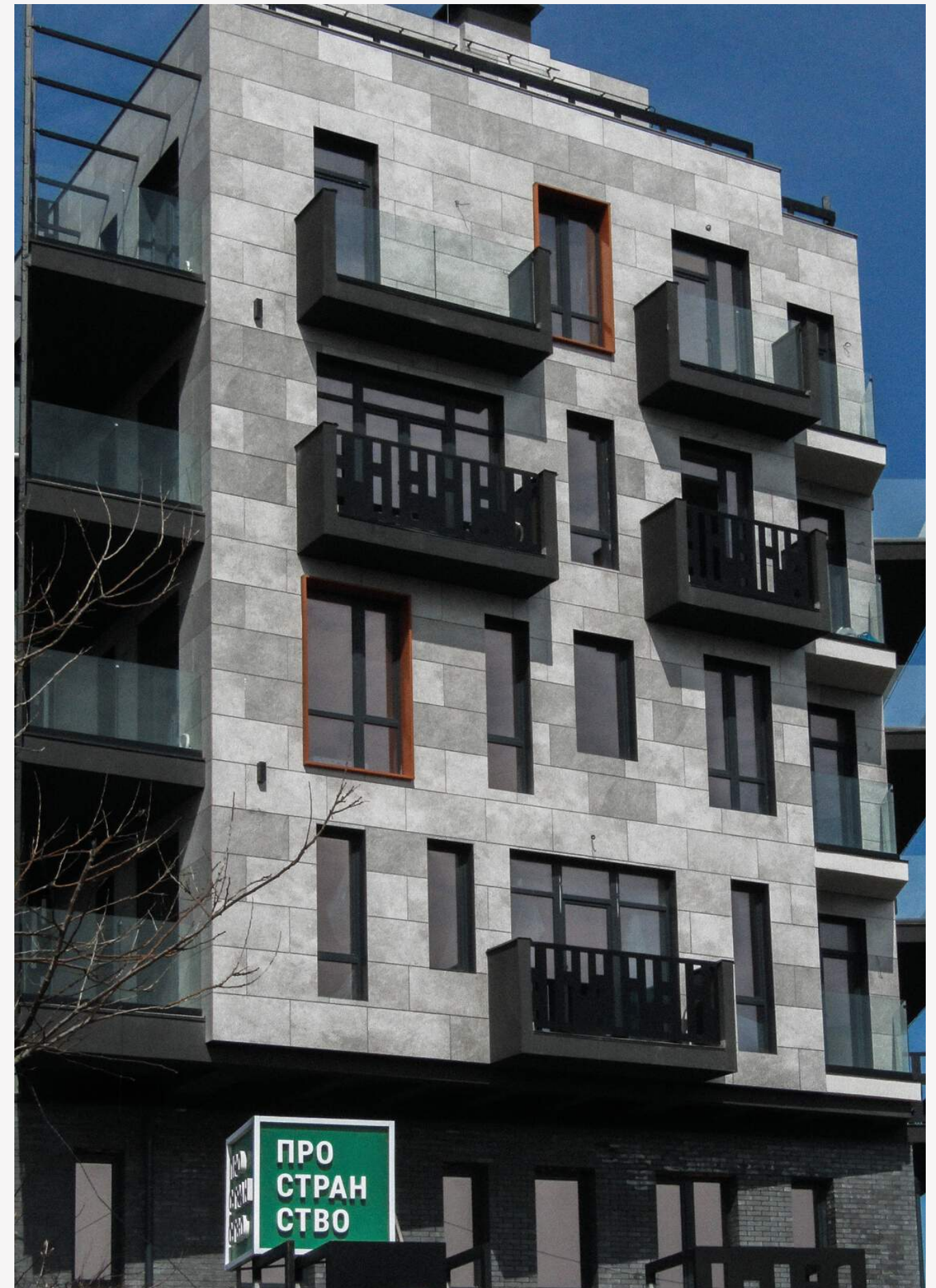
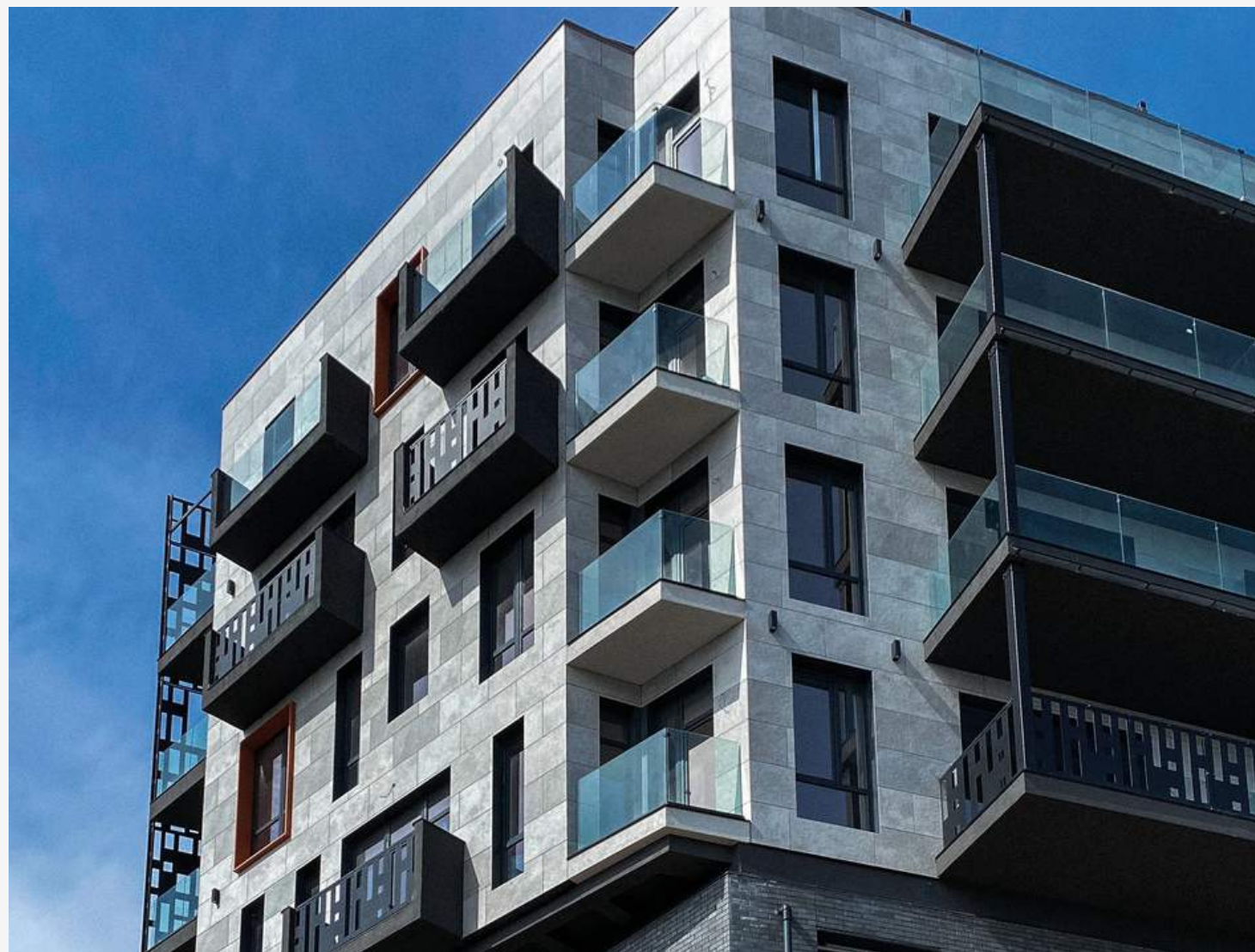


# RESIDENTIAL COMPLEX "PROSTIR NA 12 FONTANA"

 Odesa, Ukraine

 scope of work performed: 750 sq.m

 year of completion: 2020



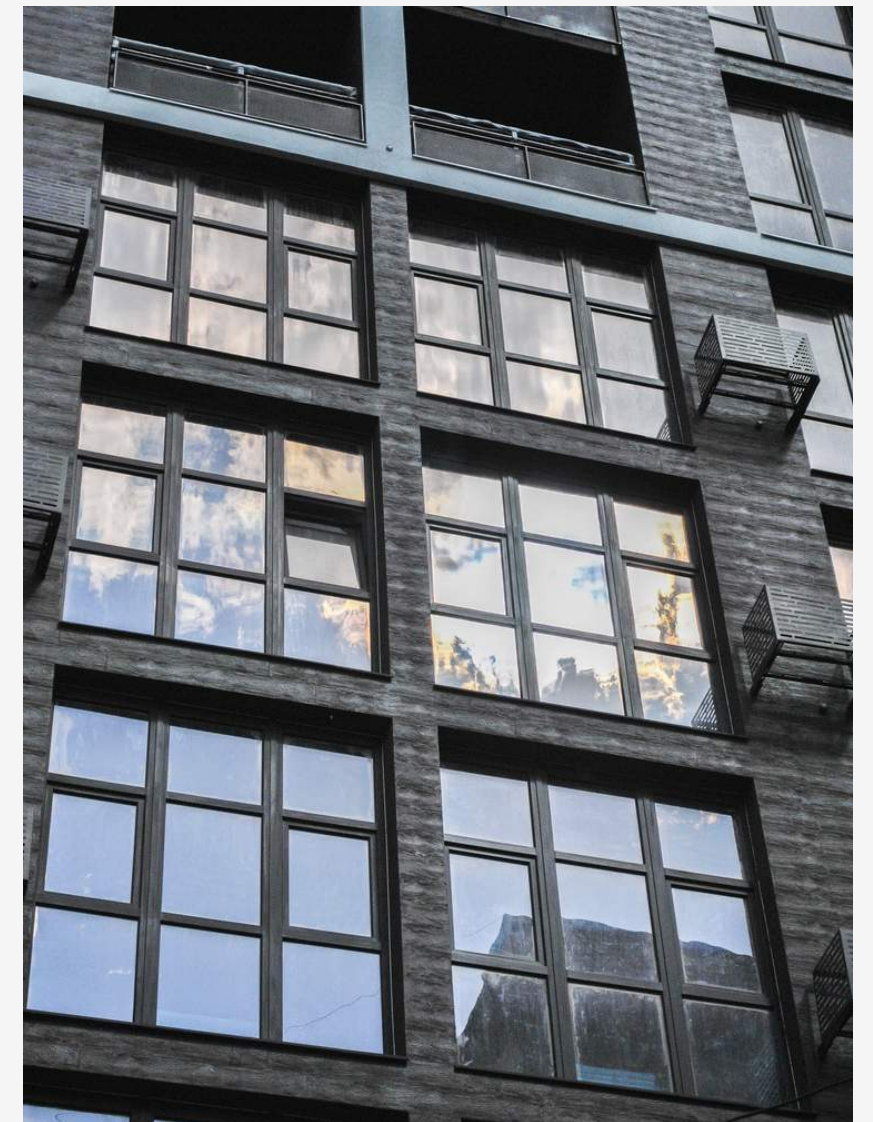


# RESIDENTIAL COMPLEX "PROSTIR NA HERANEVII"

📍 Odesa, Ukraine

📅 scope of work performed: 4750 sq.m

🕒 year of completion: 2020-2021



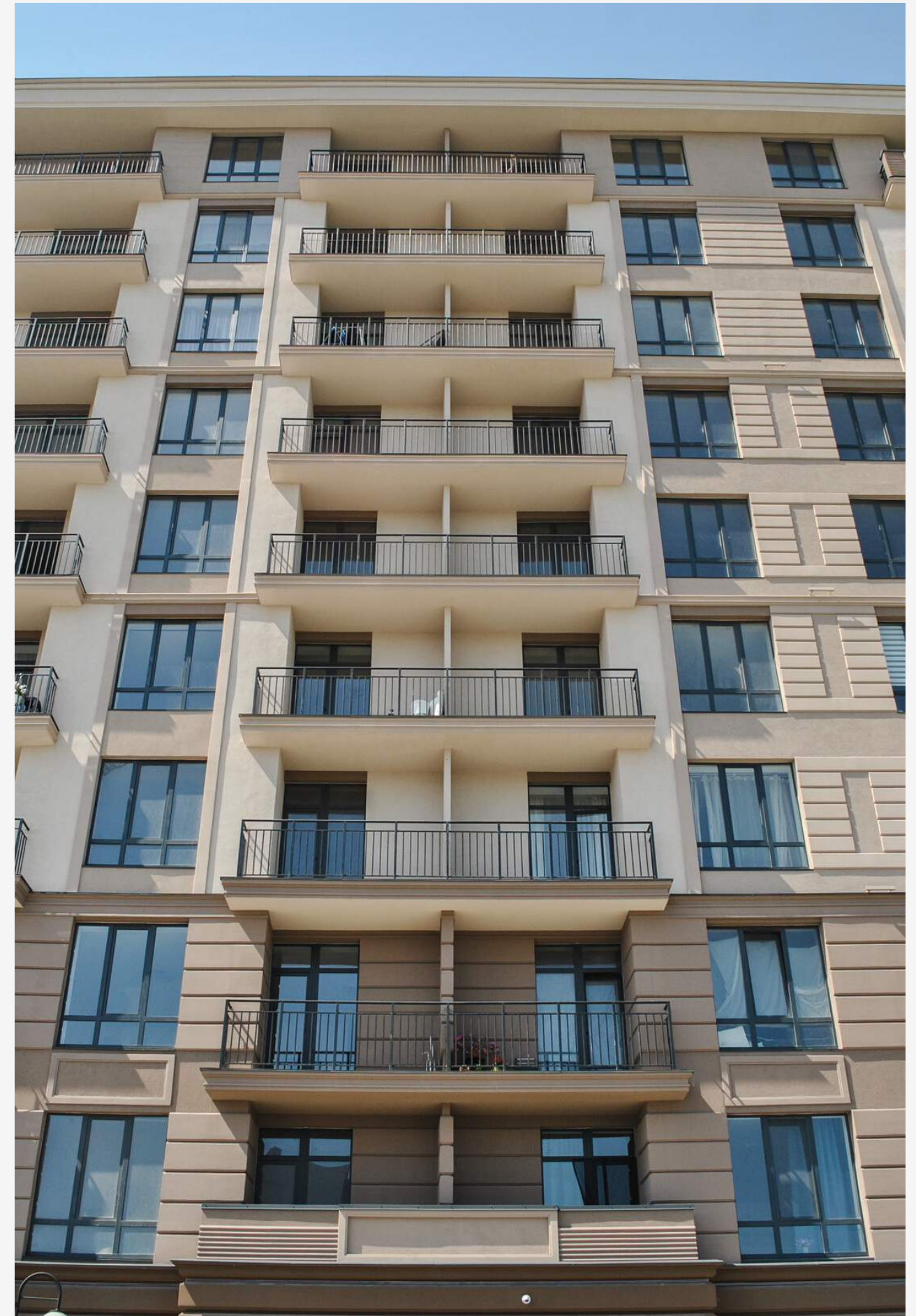


# RESIDENTIAL COMPLEX "PARK FONTANIV"

 Odesa, Ukraine

 scope of work performed: 3600 sq.m

 year of completion: 2019







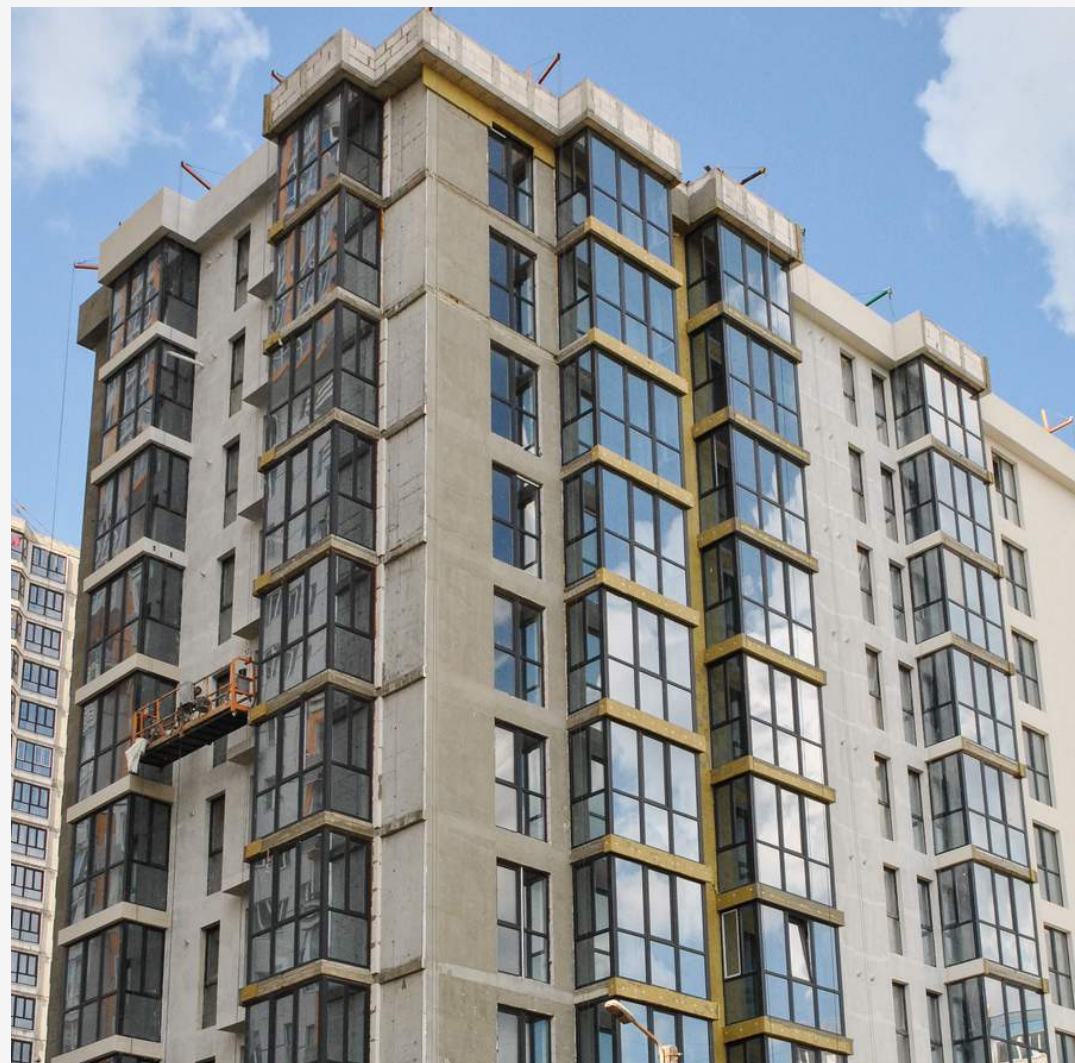


# RESIDENTIAL COMPLEX "BISKVITNYI"

 Odesa, Ukraine

 scope of work performed: 1800 sq.m

 year of completion: 2020







# RESIDENTIAL HOUSE "OSTROVA"

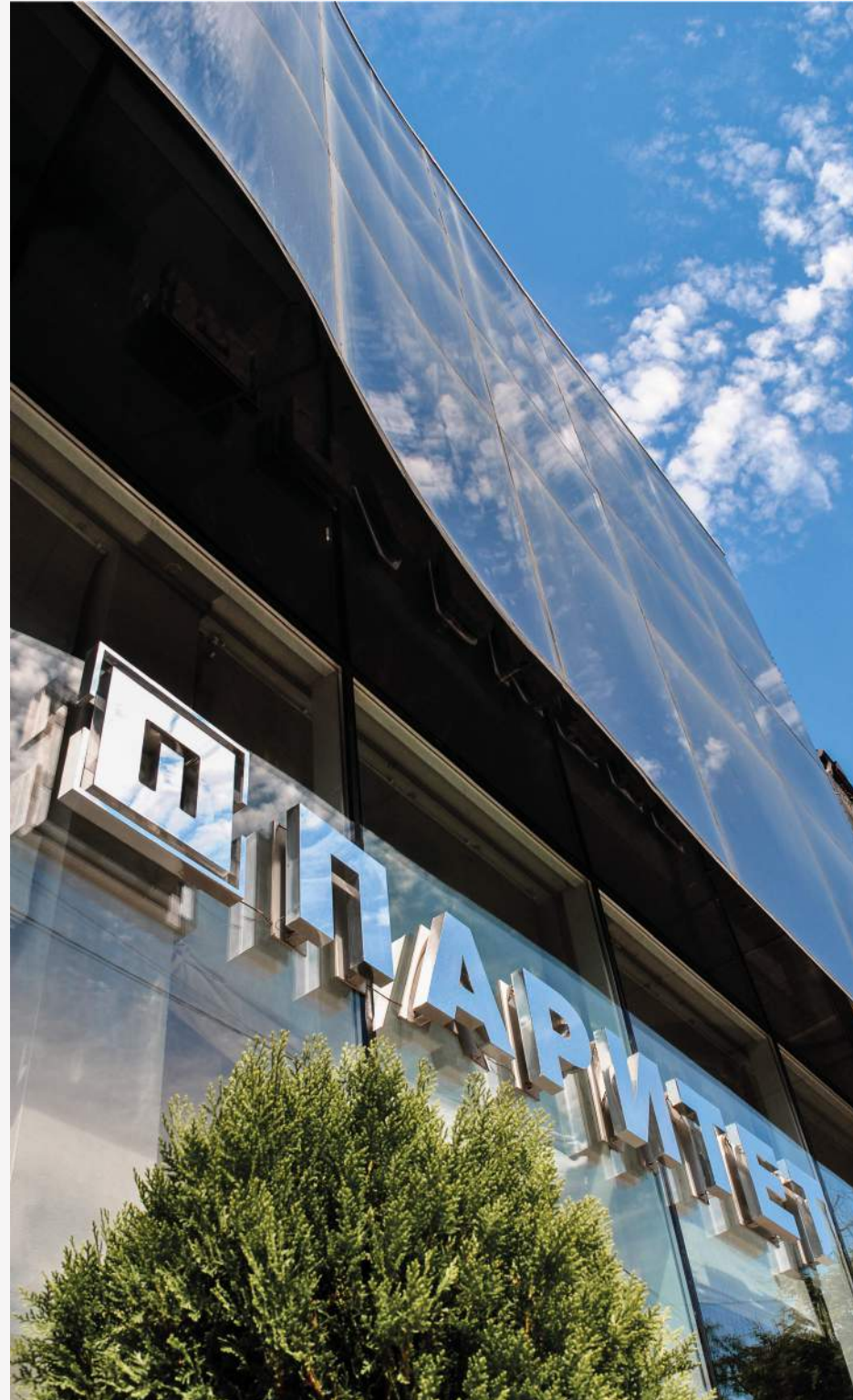
📍 Odesa, Ukraine

📅 scope of work performed: 1800 sq.m

🕒 year of completion: 2020







# CONTACTS



FACEBOOK  
@Paritet.Odessa



INSTAGRAM  
@paritetcompany

---

+38 (063) 735 34 00  
[paritetcompany.com](http://paritetcompany.com)

